

SMART SOLUTIONS FOR SECURE & SUSTAINABLE LIVING

Reliable, Customer-Centric, and Proactive solutions
for safety and energy efficiency



IMPACT
by Honeywell

ABOUT US

The IMPACT by Honeywell range of products is transforming the way India lives. The brand's constant dynamic innovation, aspiration to optimizing customer experiences, and commitment to a more sustainable future, reflect the path that a confident new India has chosen for itself.

Created especially for India, the IMPACT by Honeywell brand leverages Honeywell's globally recognized technology capabilities, and commitment to creating future-ready, world-class, and affordable solutions; in service of the rapidly growing Indian middle-income population and mid-segment business customers.



Customer-Centric
Solutions



Innovative Solutions
Designed for
Indian Markets



Reliable, Consistent
Performance



Sales Support
Across 40+
Indian Cities



Prompt Installation
and Tech Support
Team



Honeywell
Brand



CCTV RANGE

IMPACT IP SERIES (2MP & 4MP)

The IMPACT by Honeywell IP Cameras deliver exceptional image quality, built-in analytics, and remote monitoring and management.



KEY FEATURES

Built-in Mic

HD Video Quality

SD Card Support - Up to 512 GB

VCA - Tripwire/Perimeter Protection

Enhanced Video Quality with WDR

IH+265 Video Compression

Note: All models do not support this, please refer to the detailed specifications.

CCTV RANGE



I-HIE2PI-UL

2MP Dome Camera

IR Range upto 30M

Digital WDR

NA

Built- in Mic

Fix Lens 2.8MM

Polycarbonate Housing



I-HIE2PI-EL

2MP Dome Camera

IR Range upto 30M

Digital WDR

NA

Built-in Mic

Fix Lens 2.8MM

Polycarbonate Housing



I-HIE2PI-L

2MP Dome Camera

Up to 30M

120dB WDR

SD Card Support

Built-in Mic

Fix Lens 2.8MM

Polycarbonate + Metal Housing



I-HIE2PI-LC

2MP Dome Color vision

IR Range upto 20M

120dB WDR

SD Card Support

Built-in Mic

Fix Lens 2.8MM

Polycarbonate + Metal Housing



I-HID2PI-V

2MP Motorized VF Vandal Dome Camera

IR Range upto 30M

120dB WDR

SD Card Support

Built-in Mic

Motorized VF 2.8-12

Metal, IK10 Housing



I-HIE2PI-ULC

2MP Fixed Ultra Lite Color Dome Camera

IR Range up to 30M, Warm Light 15M

Digital WDR

NA

Built-in Mic

Fix Lens 2.8MM

Polycarbonate Housing

CCTV RANGE



I-HID2PI-VUL

2MP Motorized IR
Dome Camera

IR Range upto 30M

Digital WDR

SD Card Support

Built-in Mic

Motorized Lens 2.8-12

Polycarbonate Housing



I-HIE4PI-UL

4MP Dome Camera

IR Range Upto 30M

Digital WDR

NA

Built-in Mic

Fix Lens 2.8MM

Polycarbonate Housing



I-HIE4PI-EL

4MP Dome Camera

IR Range upto 30M

Digital WDR

NA

Built-in Mic

Fix Lens 2.8MM

Polycarbonate Housing



I-HIE4PI-LS

4MP Dome
Starlight Camera

IR Range upto 30M

120dB WDR

SD Card Support

Built-in Mic

Fix Lens 2.8MM

Polycarbonate +
Metal Housing

CCTV RANGE



I-HIE4PI-LC

4MP Dome Color vision

IR Range Upto 20M

120dB WDR

SD Card Support

Built-in Mic

Fix Lens 2.8MM

Polycarbonate +
Metal Housing



I-HID5PI-VS

4MP Motorized VF
Vandal Dome Camera

IR Range Up to 30M

120dB WDR

SD Card Support

Built-in Mic

Motorized VF 2.8-12

Metal, IK10 Housing



I-HIE4PI-ULC

4MP Fixed Ultra Lite
Color Dome Camera

IR Range up to 30M,
Warm Light 15M

120dB WDR

NA

Built-in Mic

Fix Lens 2.8MM

Polycarbonate Housing



I-HID4PI-VUL

4MP Motorized IR
Dome Camera

IR Range upto 30M

120dB WDR

SD Card Support

Built-in Mic

Motorized Lens 2.8-12

Polycarbonate Housing

CCTV RANGE



I-HIB2PI-UL

2MP Bullet Camera

IR Range upto 30M

Digital WDR

NA

Built-in Mic

Fix Lens 4MM

Polycarbonate Housing



I-HIB2PI-EL

2MP Bullet Camera

IR Range upto 50M

Digital WDR

NA

Built-in Mic

Fix Lens 4MM

Polycarbonate Housing



I-HIB2PI-L

2MP Bullet Camera

IR Range upto 50M

120dB WDR

SD Card Support

Built-in Mic

Fix Lens 4MM

Polycarbonate +
Metal Housing



I-HIB2PI-VUL

2MP Motorized IR
Bullet Camera

IR Range upto 80M

Digital WDR

SD Card Support

Built-in Mic

Motorized VF 2.8-12

Polycarbonate Housing



I-HIB2PI-LC

2MP Bullet Color vision

IR Range upto 20M

120dB WDR

SD Card Support

Built-in Mic

Fix Lens 4MM

Polycarbonate +
Metal Housing



I-HIB2PI-V

2MP Motorized VF
Bullet Camera

IR Range upto 80M

120dB WDR

SD Card Support

Built-in Mic

Motorized VF 2.8-12

Metal Housing



I-HIB2PI-ULC

2MP Fixed Ultra Lite
Color Bullet Camera

IR Range up to 50M,
Warm Light 15M

Digital WDR

NA

Built-in Mic

Fix Lens 4MM

Polycarbonate Housing



I-HIB4PI-UL

4MP Bullet Camera

IR Range upto 30M

Digital WDR

NA

Built-in Mic

Fix Lens 4MM

Polycarbonate Housing



I-HIB4PI-EL

4MP Bullet Camera

IR Range upto 50M

Digital WDR

NA

Built-in Mic

Fix Lens 4MM

Polycarbonate Housing



I-HIB4PI-LS

4MP Bullet
Starlight Camera

IR Range upto 50M

120dB WDR

SD Card Support

Built-in Mic

Fix Lens 4MM

Polycarbonate +
Metal Housing

CCTV RANGE



I-HIB4PI-LC

4MP Bullet Color vision

IR Range upto 20M

120dB WDR

SD Card Support

Built-in Mic

Fix Lens 4MM

Polycarbonate +
Metal Housing



I-HIB5PI-VS

4MP Motorized VF
Bullet Camera

IR Range upto 80M

120dB WDR

SD Card Support

Built-in Mic

Motorized VF 2.8-12

Metal Housing



I-HIB4PI-ULC

4MP Fixed Ultra Lite
Color Bullet Camera

IR Range up to 50M,
Warm Light 15M

120dB WDR

NA

Built-in Mic

Fix Lens 4MM

Polycarbonate Housing



I-HIB4PI-VUL

4MP Motorized VF
Bullet Camera

IR Range upto 80M

120dB WDR

SD Card Support

Built-in Mic

Motorized VF 2.8-12

Polycarbonate Housing

CCTV RANGE



I-HIP2PI-S23X

2MP 23X Starlite
PTZ Camera

IR Range upto 150M

120dB WDR

SD Card Support

Human/ vehicle
classification

4 inch Housing



I-HIP4PI-S23X

4MP 23X Starlite
PTZ Camera

IR Range upto 150M

120dB WDR

SD Card Support

Human/ vehicle
classification

4 inch Housing



I-HIP2PI-S25X

2MP 25X Starlite
PTZ Camera

IR Range upto 150M

140dB WDR

SD Card Support

Human/ vehicle
classification

6 inch Housing



I-HIP2PI-S33X

2MP 33X Starlite
PTZ Camera

IR Range upto 200M

140dB WDR

SD Card Support

Human/ vehicle
classification

6 inch Housing



CCTV RANGE

NVRs

The IMPACT by Honeywell NVRs are economical, fully featured NVRs, available in 5, 10, 20, 40 and 80 channel variants, with the ability to expand to up to 10 TB storage per HDD bay.



KEY FEATURES

- Video Compression: IH+265
- 25% Extra Channels
- Easy Installation
- Remote Configuration Capable
- Password-Protected Access
- Dual LAN port for load balancing

Note: All models do not support this, please refer to the detailed specifications.

CCTV RANGE



I-HNVR-1105

- 5CH 1HDD
- Bandwidth:
50Mbps incoming
40Mbps outgoing
- Resolution support
up to 6MP



I-HNVR-1110

- 10CH 1HDD
- Bandwidth:
50Mbps incoming
40Mbps outgoing
- Resolution support
up to 8MP



I-HNVR-1120

- 20CH 1HDD
- Bandwidth:
80Mbps incoming
80Mbps outgoing
- Resolution support
up to 8MP



I-HNVR-1220

- 20CH 2HDD
- Bandwidth:
120Mbps incoming
100Mbps outgoing
- Resolution support
up to 8MP



I-HNVR-1240

- 40CH 2HDD
- Bandwidth:
400Mbps incoming
400Mbps outgoing
- Resolution support
up to 12MP



I-HNVR-1440

- 40CH 4HDD
- Bandwidth:
400Mbps incoming
400Mbps outgoing
- Resolution support
up to 12MP
- Dual LAN
- RAID support

CCTV RANGE



I-HNVR-1880

80CH 8HDD

Bandwidth:

640Mbps incoming
320Mbps outgoing

Resolution support
up to 12MP

Dual LAN

RAID support



CCTV RANGE

IMPACT VALUE SERIES IP CAMERAS

The IMPACT by Honeywell Value Series IP Cameras deliver exceptional image quality, built-in analytics, and remote monitoring and management.



KEY FEATURES

SD Card Support upto 256GB

Triple-Stream (Main/Sub/Third)

Built-in Mic

Metal Housing, IP67

Multiple AI Support: Face Detection(FD), Human&Vehicle Detection (PD&VD), Perimeter Intrusion Detection (PID), Line Crossing Detection (LCD), Cross Counting (CC), Stationary Object Detection (SOD), Heat Map (HM), Crowd Density Detection (CD), Queue Length Detection (QD), license Plate Detection (LPD), Rare Sound Detection (RSD)

Note: All models do not support this, please refer to the detailed specifications.

CCTV RANGE



I-HIPD2PI-MF

2MP IP Fix Dome Camera

IR Range upto 30M

Multiple AI Support, TWDR

Built-in Mic

Triple-Stream

Metal, IP 67



I-HIPD2PI-MVF

2MP IP Fix Vandal Dome Camera

IR Range upto 30M

Multiple AI Support, TWDR

Alarm/Audio Port: 1/1

Triple-Stream

IK10, Metal, IP67



I-HIPD2PI-MV

2MP IP Motorized Dome Camera

IR Range Upto 30M

Multiple AI Support, TWDR

Alarm/Audio Port: 1/1

Triple-Stream, Lens 2.8~12MM

Vandal IK10,Metal, IP67



I-HIPD5PI-MF

5MP IP Fix Dome Camera

IR Range upto 30M

Multiple AI Support, TWDR

Built-in Mic

Triple-Stream

Metal Housing, IP67



I-HIPD5PI-MVF

5MP IP Fix Vandal Dome Camera

IR Range upto 30M

Multiple AI Support, TWDR

Alarm/Audio Port: 1/1

Triple-Stream

IK10, Metal, IP67



I-HIPD5PI-MV

5MP IP Motorized Dome Camera

IR Range Upto 30M

Multiple AI Support, TWDR

Alarm/Audio Port: 1/1

Triple-Stream, Lens 2.8~12MM

Vandal IK10,Metal, IP67

CCTV RANGE



I-HIPB2PI-MF

2MP IP Fix Bullet Camera

IR Range upto 30M

Multiple AI Support, TWDR

Built-in Mic

Triple-Stream

Metal Housing, IP67



I-HIPB2PI-MV

2MP IP Motorized Bullet Camera

IR Range upto 50M

Multiple AI Support, TWDR

Alarm/Audio Port: 1/1

Triple-Stream, Lens 2.8~12mm

Metal Housing, IP67



I-HIPB2PI-LPD

2MP IP Bullet Camera License Plate Detection

IR Range upto 80M

Multiple AI Support, TWDR

Alarm/Audio Port: 1/1

Triple-Stream, Lens 5~50mm

Metal Housing, IP67



I-HIPB5PI-MF

5MP IP Fix Bullet Camera

IR Range upto 30M

Multiple AI Support, TWDR

Built-in Mic

Triple-Stream

Metal Housing, IP67



I-HIPB5PI-MV

5MP IP Motorized Bullet Camera

IR Range upto 50M

Multiple AI Support, TWDR

Alarm/Audio Port: 1/1

Triple-Stream, Lens 2.8~12mm

Metal Housing, IP67



I-HIPB5PI-LPD

5MP IP Bullet Camera License Plate Detection

IR Range upto 80M

Multiple AI Support, TWDR

Alarm/Audio Port: 1/1

Triple-Stream, Lens 5~50mm

Metal Housing, IP67

CCTV RANGE



I-HIP2PI-P18X

2MP 5" 18X
PTZ Camera

IR Range upto 100M

Multiple AI Support

Alarm & Audio: 1/1

Tripal-Stream

Metal Housing, IP67



I-HIP5PI-P33X

2MP 7" 33X
PTZ Camera

IR Range upto 200M

Multiple AI Support

Alarm & Audio: 1/1

Tripal-Stream

Metal Housing, IP67



I-HIP2PI-P25X

2MP 5" 25X
PTZ Camera

IR Range upto 150M

Multiple AI Support

Alarm & Audio: 1/1

Tripal-Stream

Metal Housing, IP67



I-HIPD12PI-FSY

12MP IP Fisheye
Camera

IR Range upto 10~15M

TWDR

Built-in Mic & Speaker

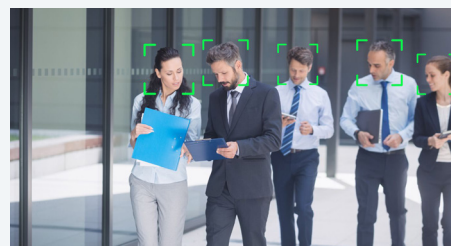
Lens 1.6mm

Metal Housing, IP67



CCTV RANGE

IMPACT VALUE SERIES AI FEATURES



Face Detection (FD)



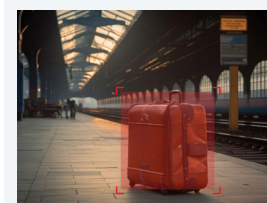
Cross Counting (CC)



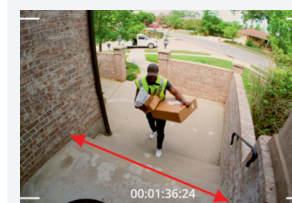
Perimeter Intrusion Detection (PID)



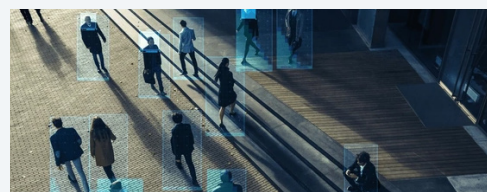
License Plate Detection (LPD)



Stationary Object Detection (SOD)



Line Crossing Detection (LCD)



Human & Vehicle Detection (PD & VD)



Queue Length Detection (QD)



Rare Sound Detection (RSD)



Heat Map (HM)



Crowd Density Detection (CD)

Crowd Density Detection (CD)

CCTV RANGE

IMPACT VALUE SERIES NVRs



I-HPNVR-416

16CH 4Sata NVR

Throughput:

320Mbps incoming
320Mbps outgoing

4 SATA interfaces,
upto 12TB

Connect camera
at upto 12MP

2×RJ45, 2 HDMI
Port, 1VGA



I-HPNVR-432

32CH 4Sata NVR

Throughput:

320Mbps incoming
320Mbps outgoing

4 SATA interfaces,
upto 12TB

Connect camera
at upto 12MP

2×RJ45, 2 HDMI
Port, 1VGA



I-HPNVR-464

64CH 4Sata NVR

Throughput:

640Mbps incoming
640Mbps outgoing

4 SATA interfaces,
upto 18TB

Connect camera
at upto 12MP

2×RJ45, 4 HDMI Port



I-HPNVR-864

64CH 8Sata NVR

Throughput:

640Mbps incoming
640Mbps outgoing

8 SATA interfaces,
upto 18TB

Connect camera
at upto 12MP

2×RJ45, 4 HDMI Port



I-HPNVR-1664

64CH 16Sata NVR

Throughput:

640Mbps incoming
640Mbps outgoing

16 SATA interfaces,
upto 18TB

Connect camera
at upto 12MP

2×RJ45, 4 HDMI Port



I-HPNVR-16256

256CH 16Sata NVR

Throughput:

1024Mbps incoming
800Mbps outgoing

16 SATA interfaces,
upto 18TB

Connect camera
at upto 12MP

2×RJ45, 4 HDMI Port

CCTV RANGE

SMART AI CAMERA

The IMPACT by Honeywell Smart AI Camera offers proactive security, with built-in AI Analytics, Advanced Detection, APP based live streaming, Night Vision, Instant Alerts, and more.



KEY FEATURES

1080P live-streaming

Trespassing Subscription Based-
Crowd and Loitering detection

SD Card Storage

Cloud Storage and Offline Alerts

Built-in AI Analytics

Multiple user access

Plug & Play Installation

Free Desktop Application

CCTV RANGE

AHD RANGE (2MP & 5MP + IMPACT DVRs)

The IMPACT by Honeywell AHD range offers high resolution surveillance that is compatible with legacy infrastructure, while delivering state of the art capabilities.



KEY FEATURES

Crystal clear images

Indoor and outdoor friendly

Diverse variants

Digital Noise Reduction

Auto WB

Note: All models do not support this, please refer to the detailed specifications.

CCTV RANGE



I-HADC-2PI-L

2MP Fixed Dome

IR Range up to 25M

Lens 3.6MM &
OSD cable

Plastic + Metal Housing



I-HADC-2PI-LA

2MP Fixed Dome
with Built-in Audio

IR Range up to 25M

Lens 3.6MM &
OSD cable

Plastic + Metal Housing



I-HADC-2PI-LC

2MP Fixed Dome
with built-in audio
& Color vision

IR Range up to 25M

Lens 3.6MM &
OSD cable

Plastic + Metal Housing



I-HADC-2PIV

2MP Varifocal Dome

IR Range up to 30M

Lens 2.8-12 MM
& OSD cable

Metal Housing



I-HADC-5PI-L

5MP Fixed Dome

IR Range up to 25M

Lens 3.6MM &
OSD cable

Plastic + Metal Housing



I-HADC-5PI-LA

5MP Fixed Dome
with Built-in Audio

IR Range up to 25M

Lens 3.6MM &
OSD cable

Plastic + Metal Housing

CCTV RANGE



I-HADC-5PI-LC

5MP Fixed Dome
with built-in audio
& Color vision

IR Range up to 25M

Lens 3.6MM &
OSD cable

Plastic + Metal Housing



I-HABC-2PI-L

2MP Fixed Bullet

IR Range up to 25M

Lens 3.6MM &
OSD cable

Plastic + Metal Housing



I-HABC-2PI-LA

2 MP Fixed Bullet
with Built-in Audio

IR Range up to 25M

Lens 3.6MM &
OSD cable

Plastic + Metal Housing



I-HABC-5PI-LA

5 MP Fixed Bullet
with Built-in Audio

IR Range up to 25M

Lens 3.6MM &
OSD cable

Plastic + Metal Housing



I-HABC-5PI-LC

5 MP Fixed Bullet
with built-in audio
& Color vision

IR Range up to 25M

Lens 3.6MM &
OSD cable

Plastic + Metal Housing



I-HABC-2PI-LC

2 MP Fixed Bullet
with built-in audio
& Color vision

IR Range up to 25M

Lens 3.6MM &
OSD cable

Plastic + Metal Housing



I-HABC-2PIV

2 MP Varifocal Bullet

IR Range up to 60M

Lens 2.8-12 MM
& OSD cable

Metal Housing



I-HABC-5PI-L

5MP Fixed Bullet

IR Range up to 25M

Lens 3.6MM &
OSD cable

Plastic + Metal Housing

CCTV RANGE

CCTV RANGE



I-HA-DVR-204-L

4 channel 2 MP
Support DVR

Support 1 sata
up to 8TB

Metal Housing



I-HA-DVR-208-L

8 channel 2 MP
Support DVR

Support 1 sata
up to 8TB

Metal Housing



I-HA-DVR-216-L

16 channel 2 MP
Support DVR

Support 1 sata
up to 8TB

Metal Housing



I-HA-DVR-504-L

4 channel 5 MP
Support DVR

Support 1 sata
up to 8TB

Metal Housing



I-HA-DVR-508-L

8 channel 5 MP
Support DVR

Support 1 sata
up to 8TB

Metal Housing



I-HA-DVR-516-L

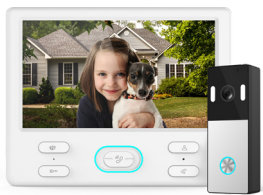
16 channel 5 MP
Support DVR

Support 2 sata
up to 8TB

Metal Housing



VIDEO DOOR PHONES



I-HVDP-SB01

7" VDP Color Kit without Memory

2 MP Outdoor camera

2-way audio Communication

IR Color night vision

Extendable to 2 outdoor units with 4 monitors and 1 CCTV camera

120° wide camera angle

Waterproof with IP65 rating

Built-in 30 different melodies



I-HVDP-SM01

7" VDP Color Kit with Memory

2 MP Outdoor camera

Snap / Video Recording

External storage up to 32GB (Class10)

Extendable to 2 outdoor units work with 4 monitors, 2 Cameras and 2 sensors

120° wide camera angle

Waterproof with IP65 rating

In-built memory to store upto 150 images

ENERGY MANAGEMENT SOLUTIONS

IR AC

The IMPACT by Honeywell IR AC saves upto 30% on energy bills, extends air conditioner lifespan, and reduces user environmental footprint without sacrificing on comfort.



KEY FEATURES

Plug and Play, Battery Operated

High Precision motion detection

Improves AC life

Lower AC Maintenance cost

Controls AC from upto 15 Ft

Works with Remote controlled ACs

PMD-100

PIR Based Motion Detector

PMD-100 is designed to sense the movement of people and automatically switches on lights and other compatible devices. As a result, it reduces electricity consumption by operating the connected devices only when required.



KEY FEATURES

Power Supply : 220-240V, 50Hz

Time Delay : 30 Sec to 30 Min

Max Load : 1200 W
(Incandescent light/ Resistive
load) 300 W Led Load

Range : 7 Mts @ 2.6 Mts Height

Night Mode (0 - 25 Lux ~)
Day Mode (Above 25 Lux ~)

Built-in Connector
Ease of wiring



FIRE SOLUTIONS

WIRELESS SMOKE DETECTOR: FDC-101

The IMPACT by Honeywell FDC-101 Wireless Smoke Detector is an affordable, plug and play but powerful defence against fire threats, without the need for complex wiring.



KEY FEATURES

Wi-Fi enabled

Battery Operated

Real-Time alerts

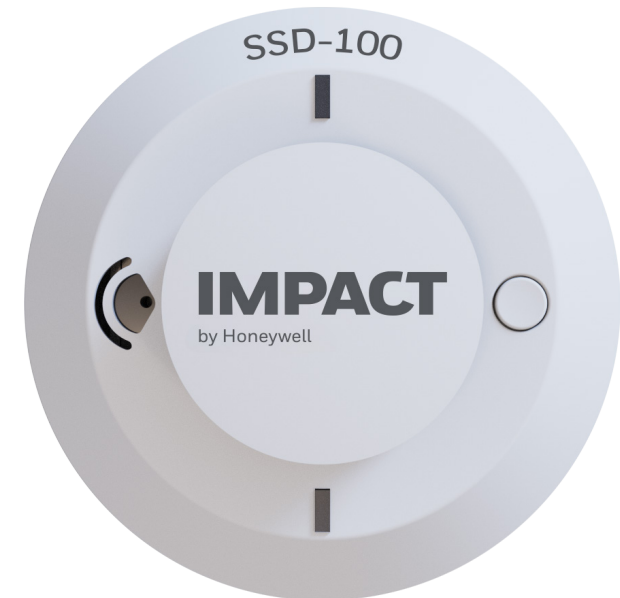
Mobile Alerts via notifications and calls

Controlled via Mobile APP

FIRE SOLUTIONS

STANDALONE SMOKE DETECTOR: SSD-100

The IMPACT by Honeywell SSD-100 single-unit smoke detectors are a plug-and-play, and low-maintenance fire detection solution with built-in alarm, that runs on AA batteries.



KEY FEATURES

Budget-friendly Pricing

Simple DIY installation

High-Performance Sensor

Battery operated



FIRE SOLUTIONS

Traditional Fire Solutions



SYSTEM SENOR

System Sensor Conventional Panel

2Z, 4Z, & 8Z
Alarm Panels



MORLEY LITE

Compact

Semi-Addressable Fire
Alarm Control Panel

Event Logging,
Programmable inputs

Earth Fault Monitoring,
lamp test

one-man-walk test
facility, Mechanical
key lock



HML/PSE

Morley Lite Smoke Detector

Low profile design

Low current draw

Bi-colour LED detector
status indicator

Programmable
sensitivity



HML/RHSE

Morley Lite Heat Detector

Low profile design

Low current draw

Bi-colour LED detector
status indicator

Programmable
sensitivity



HML/PTSE

Morley Lite Smoke & Heat Detector

Low profile design

Low current draw

Bi-colour LED detector
status indicator

Programmable
sensitivity



B/401

Detector Base



PSS RANGE



CRYSTAL PS 90

ULTRA-SLIM POINT OF SALE TERMINAL

Intel J6412 Elkhart lake processor

All metal body with sturdy design

15.6" screen with 10 points touch function

IP65 rating front panel



IH-210

DESKTOP BARCODE PRINTER

Supports TSPL and ZPL

Print speed up to 127 mm/s (5 inch/s) max

Supports thermal transfer/direct thermal printing method

Connectivity USB

1 year warranty



GL650

2D HANDS-FREE BARCODE SCANNER

Point of sale checkout

Mobile barcode scanning

Passport scanning

Simplified scanner integration



IH-2 4INCH

DESKTOP PRINTER

203 DPI thermal transfer/direct thermal

Connectivity: USB, serial & ethernet

Memory RAM 32mb/flash 16mb

Ribbon length up-to 300mts

1 Year warranty

PSS RANGE



IHR810 THERMAL

RECEIPT PRINTER

Speed: 260mm/sec

Print head life: 150km

Print width: 80mm

Connectivity: USB + serial + lan

3 Years warranty



SCANPAL EDA51

HC ANDROID MOBILE COMPUTER BUILT FOR HEALTHCARE

Fast processor, wireless connectivity

12 hours of extensive battery life

Disinfectant friendly health
care grade housing



IHS320X

2D BARCODE SCANNER

Scan speed 30 frames/second

Image CMOS scanner

Interface: USB & optional RS232

Drop resistance 3 meters

3 Years warranty



IHS310X

1D BARCODE SCANNER

Scan speed 300 scans/second

Precision 3mil

Interface: USB & optional RS232

Drop resistance 1.5 meters

3 Years warranty

PSS RANGE



IHS520BT

WIRELESS 2D BARCODE SCANNER

8000 EAN-13 barcodes
storage capacity

Bluetooth 5.0/USB connectivity

Longer operation time with
2600mAh battery

Wireless scanning range
up-to 25 meters

2 Years warranty



IHS520X

PERFORMANCE SERIES 2D BARCODE SCANNER

High precision of 3 mil

USB + serial connectivity

High-speed scanning up-
to 60 frames per second

CMOS sensor

2 Years warranty

For Productivity Solutions and Services Portfolio

Mr. Manpreet Singh (North + East) +91- 880053 3216

Mr. Saggive Kumar (West +South) +91- 996200 0969

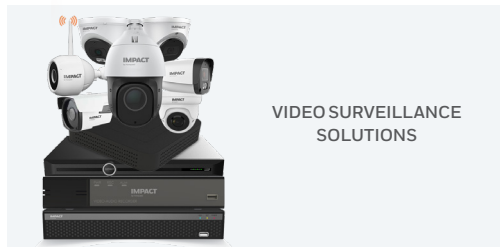
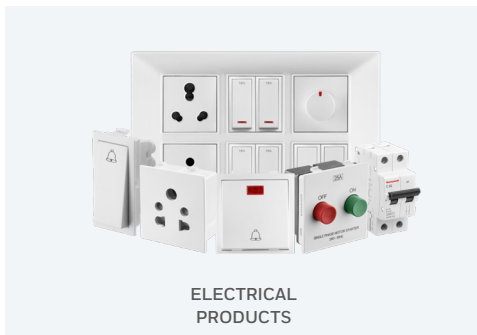
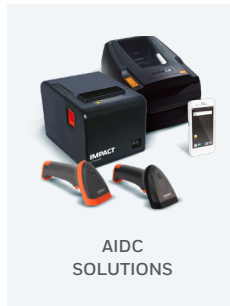
Mr. Atul Nainwal +91- 84339 00011

Email: impact.sps@honeywell.com

Website: www.impactaidc.com

Toll Free No.: 1800 890 7447

Our Complete **IMPACT** Product Range



For CCTV, Energy Management and Fire and Safety Portfolio
Mr. Bhavtendra Upadhayay (North Region) +91-701180 1233
Mr. Abdul Rahim (South Region) +91- 82772 40960
Mr. Bhausaheb Suryavanshi (West Region) +91- 85510 13005
Mr. Atul Nainwal +91-84339 00011

Email: enquiry.mms@honeywell.com
Website: www.honeywellbuildings.in
Tech Support No.: 0008000502167
RMA Support No.: 18001034761

IMPACT A5 Leaflet | 01 | 05/23
©2023 Honeywell International Inc.

PUNE
Plot No. 56/57,
Hadapsar Industrial Estate,
Pune - 411 013

IMPACT
by Honeywell